



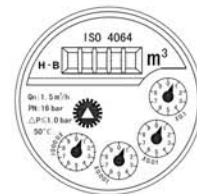
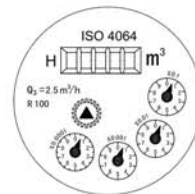
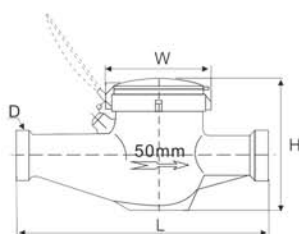
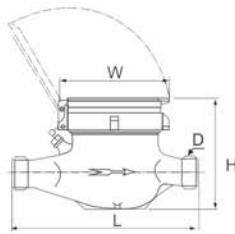
“MP” Water Meter

WORKING CONDITION:

- Water temperature $\leq 50^{\circ}\text{C}$ (Hot water meter $\leq 90^{\circ}\text{C}$)
- Water pressure $\leq 1\text{MPa}$ (PN: 1.6MPa/16bar)
- $\Delta P \leq 0.1\text{MPa}$ (Class B)
 $\Delta P \leq 0.063\text{MPa}$ (R80/R100)

ACCURACY:

- From minimum flow-rate (q_{\min} / q_1) inclusive, to transitional flow-rate (q_1 / q_2), exclusive: $\pm 5\%$
- From transitional flow-rate (q_1 / q_2) inclusive, to overload flow-rate (q_3 / q_4), exclusive: $\pm 2\%$ (Hot water meter: $\pm 3\%$)



TECHNICAL DATA:

DN/Q	$Q_4=1.25Q_3$ Q_3		$R=Q_3/Q_1$	$Q_2=1.6Q_1$ Q_1		$R=Q_3/Q_1$	$Q_2=1.6Q_1$ Q_1	
	l/h			l/h			l/h	
15	3125	2500	80	50	31.25	100	40	25
20	5000	4000	80	80	50	100	64	40
25	7875	6300	80	126	78.75	100	100.8	63
32	12500	10000	80	200	125	100	160	100
40	20000	16000	80	320	200	100	256	160
50	31250	25000	80	400	250	100	400	250

Nominal size DN(mm)	Class of measurement	Overload flow-rate $q_4(\text{m}^3/\text{h})$	Permanent flow-rate $q_2(\text{m}^3/\text{h})$	Transitional flow-rate $q_1(\text{l/h})$	Minimum flow-rate $q_{\min}(\text{l/h})$
15	B	3	1.5	120	30
20	B	5	2.5	200	50
25	B	7	3.5	280	70
32	B	12	6.0	480	120
40	B	20	10	800	200
50	B	30	15	3000	450

OVERALL DIMENSIONS AND WEIGHT

Size (mm)	Length (mm) L	Width (mm) W	Height (mm) H	Connecting Thread D	Weight (kg)
15	165	99	104	G 3/4" B	1.5
20	195/190	99	106	G 1" B	1.7
25	225/260	104	120	G1 1/4" B	2.4
32	230/260	104	120	G1 1/2" B	2.8
40	245/300	120	155	G 2" B	5.1
50	280/300	125	155	G2 1/2" B	7.2

