

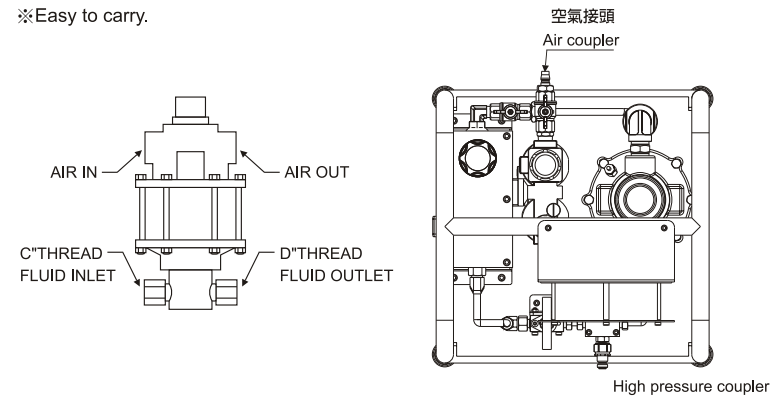
## SPAQH 超高壓框架型氣動泵浦

- 具三點組合、濾水調壓、自動潤滑、洩壓閥。
- 具進水過濾器，過濾雜質保護機體。
- 不銹鋼底座及框架。
- 便於提攜。



## High Pressure Frame Air Pump

- ※ Air units (F.R.L. Unit) provide filter, regulator and lubricate.
- ※ Input water filter which provide protect.
- ※ Steel base and frame.
- ※ Easy to carry.



Model Number 型號	Compress Ratio 壓縮比	Output oil 出油量 (cm <sup>3</sup> /per stroke)	Work press. 工作壓力 (bar)	Air press. 使用空壓 (Kgf/cm <sup>2</sup> )	Equipped reservoir 儲油箱 ★ (c.c)	Weight 重量 (kg)	Dimensions 外型尺寸		
							C	D	(mm)
SPAQH-130-1500	1:310	1.2	1500	5~7	5600	25	1/4PT-19	9/16-18UNF	400*400*420
SPAQH-180-1500	1:300	5.0	1500	5~7					
SPAQH-180-2400	1:610	2.4	2400	5~7					

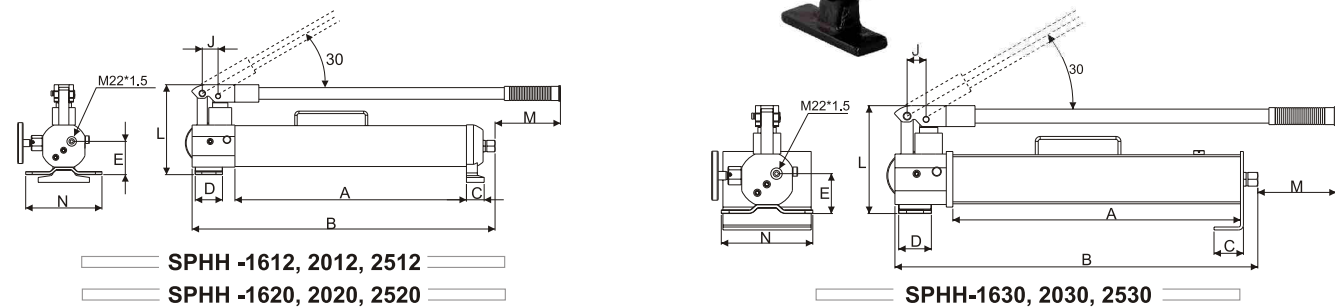
★ 油箱可以需求訂製 ※ Reservoir will be changed by user.  
※ 重量及外型尺寸依油箱改變 ※ Weight and dimension will be changed by reservoir alter.

## SPHH 超高壓手動泵浦

- 手動泵浦內含安全閥設計，避免超壓引起損壞。

## High Pressure Manual Pump

※ Manual Pump include internal pressure relief valve for overload protection.



Model Number 型號	Pump Type 泵浦類型	Usable Oil Capacity 有效油量 (cm <sup>3</sup> )	Pressure Rating 輸出壓力		Oil Displacement per Stroke 輸出油量		Piston Stroke 行程 (mm)	Dimensions(mm) 外型尺寸								Weight 重量 (kg)	
			1 <sup>st</sup> stage	2 <sup>nd</sup> stage	1 <sup>st</sup> stage	2 <sup>nd</sup> stage		A	B	C	D	E	J	L	M		N
SPHH-1612	雙速 Two-Speed	1200	14	1600	15.5	1.2	16.65	425	556	32.5	50	61	29	165	120	140	9.0
SPHH-2012		1200	14	2000	15.5	0.9	16.65	425	556	32.5	50	61	29	165	120	140	9.0
SPHH-2512		1200	14	2500	15.5	0.7	16.65	425	556	32.5	50	61	29	165	120	140	9.0
SPHH-1620		2200	14	1600	15.5	1.2	16.65	425	556	32.5	50	61	29	165	120	140	11.0
SPHH-2020		2200	14	2000	15.5	0.9	16.65	425	556	32.5	50	61	29	165	120	140	11.0
SPHH-2520		2200	14	2500	15.5	0.7	16.65	425	556	32.5	50	61	29	165	120	140	11.0
SPHH-1630		3000	14	1600	15.5	1.2	16.65	440	556	45.0	50	61	29	165	120	140	13.0
SPHH-2030		3000	14	2000	15.5	0.9	16.65	440	556	45.0	50	61	29	165	120	140	13.0
SPHH-2530		3000	14	2500	15.5	0.7	16.65	440	556	45.0	50	61	29	165	120	140	13.0

## SPE-200RI 超高壓電動泵浦

- 噪音更低。
- 體積輕巧。
- 適合於配套螺栓拉伸器、造船、風電等現場作業。
- 搭配壓力錶以及壓力開關。
- 高低壓二段式自動切換，系統效率高。

## High Pressure Hydraulic Electric Pump

- ※ The adoption of a magnet motor reduces the noise remarkably.
- ※ The durability has been improved while the performances are maintained.
- ※ Lightweight, compact, and easy to transport. Ideal for site work such as shipyard and civil engineering construction.
- ※ A pressure gauge and a pressure switch are included in each model.
- ※ Automatic high-low pressure switching for improved work efficiency.

\*壓力錶以及壓力開關為SPE-200RI專用，如需搭配其它系列產品混用請諮詢本公司。

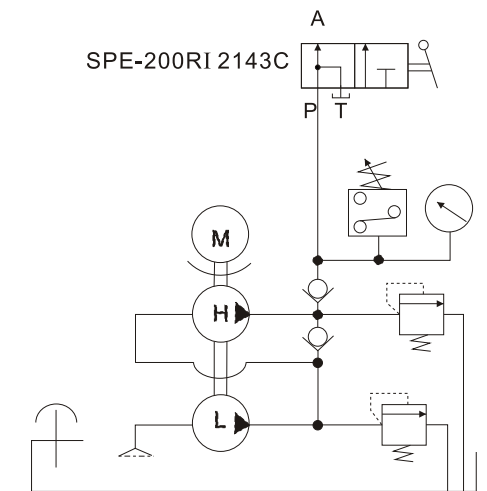
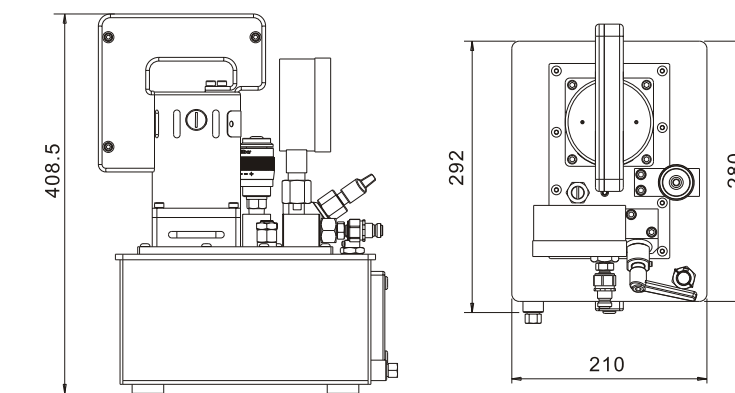
\*The pressure gauge and switch are exclusive to the SPE-200RI series. Consult us when them with other series.

## SPE-200RI 2143C

- |                                    |   |
|------------------------------------|---|
| 1.馬達<br>200RI=0.625HP(0.5kw)       | 1.Voltage<br>200RI=0.625HP(0.5kw)         |
| 2.電壓/安培<br>1=110V/12A<br>2=220V/7A | 2.Voltage/A<br>1=110V/12A<br>2=220V/7A    |
| 3.相數<br>1=1ph                      | 3.Phase<br>1=1ph                          |
| 4.油箱<br>4=4L                       | 4.Reservoir<br>4=4L                       |
| 5.閥門樣式<br>3=手動三口二位控制閥              | 5.Valve<br>3=3way/ 2position Manual Valve |
| 6.配件<br>C=線控裝置                     | 6.fitting<br>C=Remote control             |



SPE-200RI



Model Number 型號	Motor 馬達	Max. Pressure 最大使用壓力	Pressure Rating (psi)/(bar) 輸出壓力		Output flow rate (L/min) 輸出油量		Weight (include oil) 重量 (含油) (kg)
			1 <sup>st</sup> stage	2 <sup>nd</sup> stage	1 <sup>st</sup> stage	2 <sup>nd</sup> stage	
SPE-200RI	0.5(5/8)	29,000(2000)	435(30)	29,000(2000)	2	0.13	24