

# Actuators

Includes NFPA Aluminum and Rodless, ISO/VDMA, and Round body compact cylinders. The Norgren Express catalog lists the part numbers of hundreds of configurations, available for rapid delivery. Alternate configurations are also available and are just a phone call or email away. Contact the Express Team for fast, expert advice. All the accessories are clearly listed to help ensure you get all the parts needed to get the job done.



# Fast Find Guide

## NFPA CYLINDERS

**NEN SERIES NFPA  
ALUMINUM CYLINDERS**  
Ø 1-1/2" TO 4"



**NFPA A-SERIES  
ALUMINUM CYLINDERS**  
Ø 1-1/2" TO 4"



## ISO/VDMA CYLINDERS

**ISO/VDMA CYLINDERS**  
Ø 32 to 320 mm



**ISO/VDMA PROFILE  
CYLINDERS**  
Ø 32 to 120 mm



## ROUNDLINE CYLINDERS

**ROUNDLINE PLUS  
STAINLESS STEEL  
CYLINDERS**  
Ø 5/16" to 3"



## COMPACT CYLINDERS

**F-SERIES PLUS**  
Ø 9/16" to 4"



## LINTRA® Rodless Cylinders

**LINTRA PLUS**  
C/146000  
Ø 25 to 63 mm



## SWITCHES

**MAGNETICALLY  
OPERATED SWITCHES**



# Valves

Norgren Express stocks a wide range of valves for your rapid replacement needs. Included in this section are solenoid valves, proportional valves, process valves and mechanical valves. We also offer the V50 Series which can be configured to your requirements and sent in a very rapid turnaround time. For expert advice and guidance on valve products call the Express team or go to [NorgrenExpress.com](http://NorgrenExpress.com).



# Fast Find Guide

## VALVE MANIFOLDS

### VS18/VS26

2 x 2/2, 2 x 3/2, 5/2 and  
5/3 valves, ISO 15407-2  
18 mm and 26 mm



## SUBBASE VALVES

### MINI ISO V40/V41

5/2  
ISO 15407-1/VDMA 24 563  
18 mm



### MINI ISO STAR V44/V45

5/2 and 5/3 Valves  
ISO 15407-1/VDMA 24 563  
26 mm



### ISO★STAR

5/2 and 5/3  
ISO #1 to ISO #3



## IN-LINE AND MANIFOLD VALVES

### V60 - 62 SERIES

3/2, 5/2, and 5/3  
1/8" to 1/2"



### V50 - 53

3/2, 5/2 and 5/3  
1/8" to 1/2"



## MANUAL/MECHANICAL VALVES

### PROSPECTOR POPPET VALVES

1/2" Basic



### NUGGET 200 SPOOL VALVES

3/2, 5/2 and 5/3  
1/4", 3/8", and 1/2"



### Super X

3/2, 5/2 and 5/3  
1/8" and 1/4"



## SAFETY VALVES

### INLINE LOCKOUT VALVE

1/2", and 1"



# Pressure sensing and control

A comprehensive range of Pressure Switches, providing a range of different options for converting pressure changes into an electrical signal. The range includes electro-mechanical and electronic switches suitable for pneumatic and hydraulic applications. Catalog pages show comprehensive data.



# Fast Find Guide

## PROPORTIONAL PRESSURE CONTROL VALVE

### VP50

1/4" NPT  
200 PSIG (14 ba)



### VP51

Programmable



## ELECTRONIC PRESSURE SWITCHES

### 33D

Pneumatic/Allfluid

200 PSIG (14 bar)



## ELECTRO-MECHANICAL PRESSURE SWITCHES

### 18D Pneumatic

Vac to 435 PSIG



### 18D Hydraulic

70 to 6100 PSIG



# Airline Preparation

Going right back to 1927 when Carl Norgren first sketched out the design for the original Lubricator, Norgren has been at the forefront of air preparation products. In this section you will find a range of top quality airline products, from the new innovative Excelon Pro, to industry renowned Excelon filters, regulators and lubricators to stainless steel units as well as precision and special purpose pressure regulators. Use the fast find guide to speed you to the right product to get the job done, follow the links at the bottom of each page to get rich technical data online or call the team for rapid quotation and delivery.



# Fast Find Guide

## EXCELON® PRO – MODULAR SYSTEM

**Combination units**  
ø 1/4"



**General purpose filter**  
**F92**  
ø 1/4"



**Coalescing filter**  
**F92C**  
ø 1/4"



**Regulator**  
**R92**  
ø 1/4"



**Filter/regulator**  
**B92**  
ø 1/4"



**Lubricator (oil-fog)**  
**L92**  
ø 1/4"



**Lockout/Shut-off**  
**valve T92**  
ø 1/4"



## EXCELON® – MODULAR SYSTEM

**Excelon modular**  
**system**  
**Box sets**  
1/4" to 1/2"



**General purpose filters**  
**F72G, F73G, F74G**  
1/4" to 3/4"



**Oil removal filters**  
**F72C, F73C, F74C, F74H**  
1/4" to 3/4"



**Oil vapor removal**  
**filters F72V, F74V**  
1/4" to 3/4"



**Pressure regulators**  
**R72G, R73G, R74G**  
1/4" to 3/4"



**Filter/regulators**  
**B72G, B73G, B74G**  
1/4" to 3/4"



**Manifold regulators**  
**R72M, R74M**  
1/4" and 1/2"



**Lubricators**  
**L72, L73, L74**  
1/4" to 3/4"



**Pressure relief valves**  
**V72G, V74G**  
1/4" to 3/4"



**Lockout valves**  
**T72, T73, T74**  
1/4" to 3/4"



**Soft start/dump valves**  
**P72F, P74F**  
1/4" to 3/4"



## MINIATURE SERIES, GENERAL PURPOSE

**Filter/regulators-**  
**lubricators**  
**PTH**  
1/8" and 1/4"



**General purpose filter**  
**F07**  
1/8", 1/4"



**Regulators**  
**R07, R46**  
1/8", 1/4"



**Filter/regulator**  
**B07**  
1/8", 1/4"



**Oil removal filter**  
**F39**  
1/8", 1/4"



**Lubricators**  
**L07**  
1/8, 1/4



**Pressure**  
**relief valve –**  
**diaphragm type V07**  
1/8", 1/4"





# Fast Find Guide

## MAINLINE SERIES UNITS

**General purpose filters  
F17**  
3/4" to 1-1/2"



**General purpose filters  
F18**  
1/2" and 2"



**Coalescing filter  
F46**  
3/4", 1", 1-1/4"



**Regulators  
R17**  
3/4" to and 1-1/2"



**Pilot operated  
regulators  
R18**  
1-1/2" and 2"



**Lubricators  
L17**  
3/4" to 1-1/2"



## SPECIAL PURPOSE

**'Micro Trol' special  
purpose pressure  
regulators R24**  
1/4" to 1-1/4"



**Precision regulators  
11-002 and 20AG**  
1/4" to 1"



**Pilot operated  
pressure regulator  
11-808, 11-042**  
1/2" to 1-1/4"



**Conventional and  
Feedback pilot  
regulators R40, R41**  
1/4"



**Pilot operated  
regulators  
20-AL, 11-400, 11-104**  
1/4"



**Precision pressure  
regulator  
11-018, R27**  
1/4"



**Precision instrument  
regulator and filter/  
regulator R38, B38**  
1/4"



## STAINLESS STEEL – GENERAL PURPOSE AND PRECISION

**Precision regulator, nd  
filter/regulator  
R38, B38**  
1/4"



**General purpose  
filter/regulator B38**



**Filters, pressure  
regulators, lubricators  
F22, R22, L22**  
1/2" NPTF



**General purpose  
regulators & filter-  
regulator  
R05, B05**  
1/4" PTF



## COMPRESSED AIR, WATER, AND BEVERAGE

**Water pressure  
regulator 11 044**  
1/4" tube connection



**Water/air regulator  
R06**  
1/8" and 1/4"



**Water regulator  
R91**  
1/4"



**Water regulators  
R43, 11 009**  
1/4", 3/8", and 1/2"



**U.L. listed industrial  
service regulators  
R44**  
1/4"



**U.L. listed beverage  
regulators  
R81, R82, R83, R84**  
1/4"



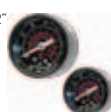
**Relief valves  
16-004**  
1/8", 1/4"



**Drip leg drain  
17-016**  
1/8", 1/4"



**Gauges  
18-013**  
1/8", and 1/2"



**Blow guns  
BG Series**  
1/4"

