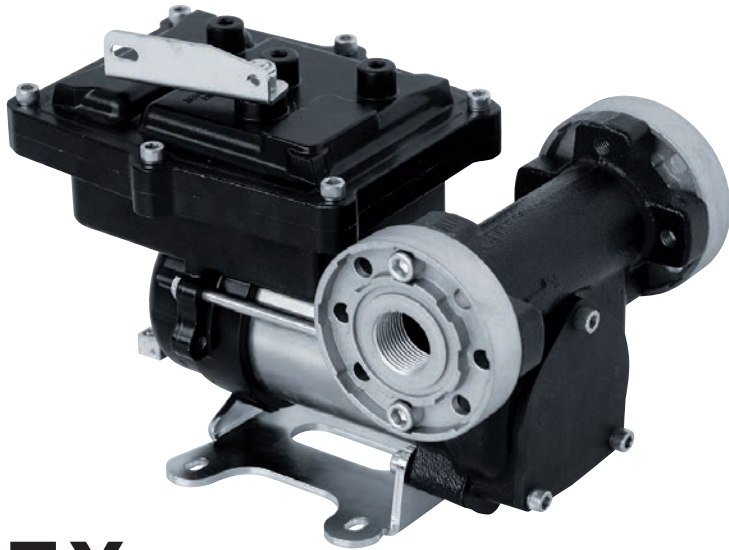


15 GPM

FUEL TRANSFER PUMP



EX50

The **Piisi EX50 UL/CSA-listed** fuel transfer pump kit is designed for the **dispensing of gasoline, diesel and kerosene**. These UL/CSA-listed pumps come with **auto-nozzle, delivery hose, downtube, tank connector, optional flow meter and/or filter**. The **EX50 fuel pump** is designed to **last longer and maintain higher flow rates** when used with accessories that create resistance.

- Designed to be used in **automotive, agriculture and construction** applications
- Available in **12V DC and 120V AC**, both deliver **up to 15 GPM**
- Bypass valve ensures a **consistent flow rate**
- Comes with **UL/CSA-listed auto-nozzle and motor**
- Vane and rotor design allow for **greater fuel displacement** per revolution
- Drum connector has a **built-in strainer** which is **easy to remove for cleaning**
- **Spring-loaded vanes** provide **higher suction capabilities** and **flow rate**
- **30 minute duty cycle**



ACCESSORIES

2" Connector Included Code F1792000	Hose Included Code F18628000	Water Filter Available Code F18797000	Cable Gland Available Code F18624000
Automatic Nozzle Included Code F18635000	Telescopic Pipe Included max. 43 inch Code F17923000	Metric Adapter Available Code F18156000	Power Supply Cable Available Code F18626000

Code	Description	Fluids	Nozzle	Duty Cycle
FO0371500	12V EX50 Pump	D G K Jf	-	30 mins.
FO0373500	120V EX50 Pump	D G K Jf	-	30 mins.
FO0372500	12V EX50 w/ Nozzle Holder	D G K Jf	-	30 mins.
FO0374500	120V EX50 w/ Nozzle Holder	D G K Jf	-	30 mins.
FO0372510	12V EX50 Essential Kit	D G K	Auto	30 mins.
FO0374510	120V EX50 Essential Kit	D G K	Auto	30 mins.
FO0375500	12V EX50 Prime Kit	D G K	Auto	30 mins.
FO0376500	120V EX50 Prime Kit	D G K	Auto	30 mins.

15 GPM

25 GPM

30 GPM

DIESEL TRANSFER PUMPS

These vane pumps represent 20+ years of reliability as the industry standard for diesel transfer.

PANTHER 56

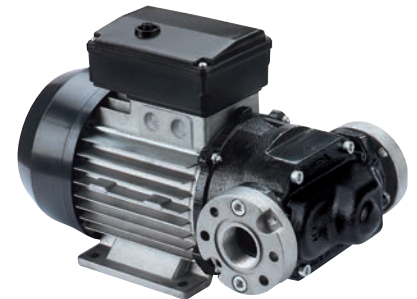
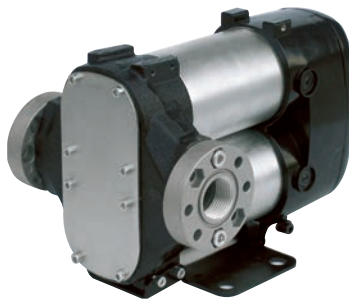
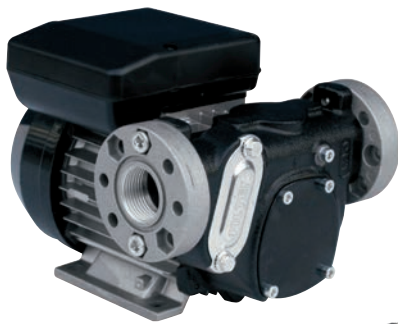
- Standard flow rate diesel transfer
- Self-priming rotary vane pump
- 15 GPM - 1" NPT flange - 120v AC
- Induction motor with heavy-duty aluminum casing with bypass valve
- Suitable for continuous use with thermal overload protection

BI-PUMP

- Heavy-duty, high flow diesel transfer
- Dual rotary vane pump
- 25 GPM- 1" NPT flange - 12v DC
- Bypass valve incorporated into the pump body
- 30 minute duty cycle
- 13 feet of cables with integrated On/Off switch

E120

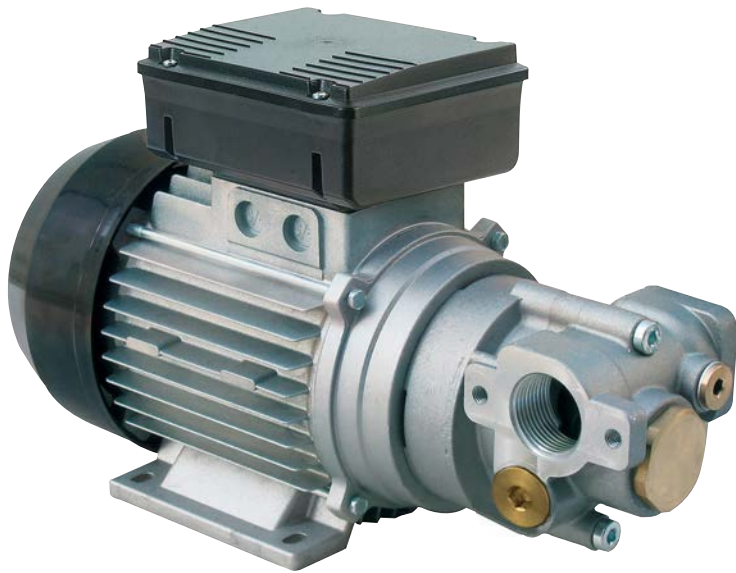
- Heavy-duty, high flow diesel transfer
- Self-priming rotary vane pump
- 30 GPM - 1" NPT flange - 120v AC
- Induction motor with heavy-duty aluminum casing with bypass valve
- Suitable for continuous use with thermal overload protection



BI-PUMP KIT INCLUDES
 Auto-nozzle
 18 ft. of delivery hose
 Telescopic downtube

Code	Description	Flow Rate	Motor		Fluids	Inlet - Outlet	Weight lb.	Packaging in.
		GPM	volts/amp/hz	RPM				
Foo32701B	E120 NPT	30	120V / 12 Amp / 60 Hz	1750	D	1" NPT	35	13 x 7 x 11
Foo222200	Bi-pump Kit	25	12V / 42 Amp / -	2000	D	1" NPT	48	23 x 16 x 13.5
Foo36305A	Bi-pump 12V with Cable 13 ft.	25	12V / 42 Amp / -	2000	D	1" NPT	18	13 x 7 x 10
Foo36306A	Bi-pump 24V with Cable 13 ft.	25	24V / 22 Amp / -	2000	D	1" NPT	22	13 x 7 x 10
Foo730410	Panther 56	15	120V / 7.5 Amp / 60 Hz	2400	D	1" NPT	22	13 x 7 x 11

OIL EQUIPMENT VISCOMAT



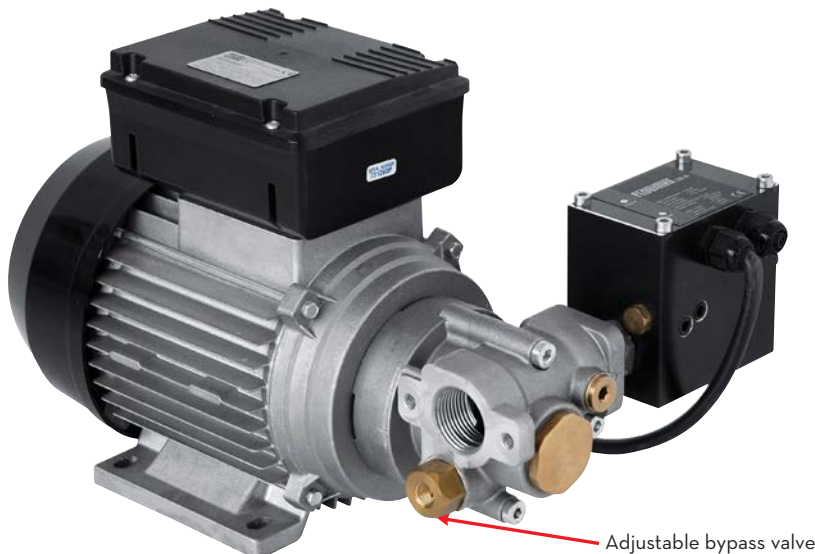
200/2



GEAR

Viscomat gear is a family of **internal profile gear pumps** designed as the **modern**, effective solution for various requirements when **pumping oils and lubricants**.

- **Flow rate** 2.4 GPM
- **Pressure** up to 170 psi
- **Continuous** operation
- **Noise** less than **70 dB**
- **Viscosity** up to **2000cSt**
- **Self-priming pump**



350/2+FLOWMAT



GEAR

Gear pumps with pressure switch. The “**Flowmat**” is designed to satisfy requirements of **constant flow** deliveries with a **self-priming pump** featuring **automatic switch-off** on the completion of delivery.

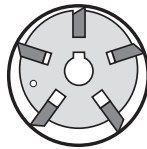
- **Flow rate** 2.4 GPM
- **Pressure** up to 355 psi
- **Continuous** operation
- Automatic **switch-on** and **switch-off**
- Uniform **pulseless flow**
- **Noise** less than **65 dB**
- **Viscosity** up to **2000cSt**
- **Self-priming pump**

Code	Description	Flow Rate	Fluid	Pressure	Motor			Inlet - Outlet	Weight	Packaging
		GPM			psi	amp	watt			
F0030421D	Viscomat 200/2 120V 60 Hz + cable + switch	2.4		170	12	1200	1700	3/4" NPT	31	14 x 11 x 8
F0030210A	Viscomat 350/2 M 120/60 + Flowmat	2.4		355	13	1500	1730	3/4" NPT / 1" NPT	47	19 x 15 x 11

OIL EQUIPMENT VISCOMAT 70

Viscomat **vane pumps** for **transferring medium-viscosity oils** with **high flow rates**.

- **Flow rate** 7 GPM
- **Pressure** up to 87 psi
- **Continuous operation**
- **Noise** less than 70 dB
- **Viscosity** 500cSt
- **12 Amp** - 1200 watt - 1700 rpm
- **1" NPT Inlet - Outlet**



VANE



Adjustable bypass valve



Code	Description	Fluids	Weight lb.	Packaging
F0033991C	Viscomat 70 120V 60 Hz		32	14 x 11 x 8