

In the phase of the design and the installation of a centralized system for the distribution of fluids it is extremely important to select the appropriate pipework components in order to reach the best possible performances of the dispensing equipment and to optimize like that the productivity.

For the choice of the suitable pipework components therefore must be considered the distances between pumps and dispensing points, the required deliveries in liters per minute, the simultaneity of various dispenses, the level differences in the pipework, the characteristics of the dispensed liquid and the surrounding temperature.

Based on its experience of more than 500 designed and carried out centralized pipework installations, Flexbimec advises for the oil distribution high pressure steel pipes according to norm DIN 2391 and pipe connection elements according to DIN 2353, as well as high pressure shut-off valves, pressure reduction valves, pressure relief valves and non-return valves, rubber hoses according to SAE R1T for oils, antifreeze, diesel and similar liquids and high pressure rubber hoses according to SAE R2T for grease and water at high pressure.

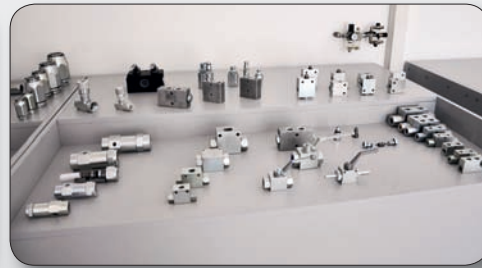
On the following pages are some recommendations of the essential components for professional pipework installations. For selecting the suitable hoses please see pages 36 and 68 of this catalogue.

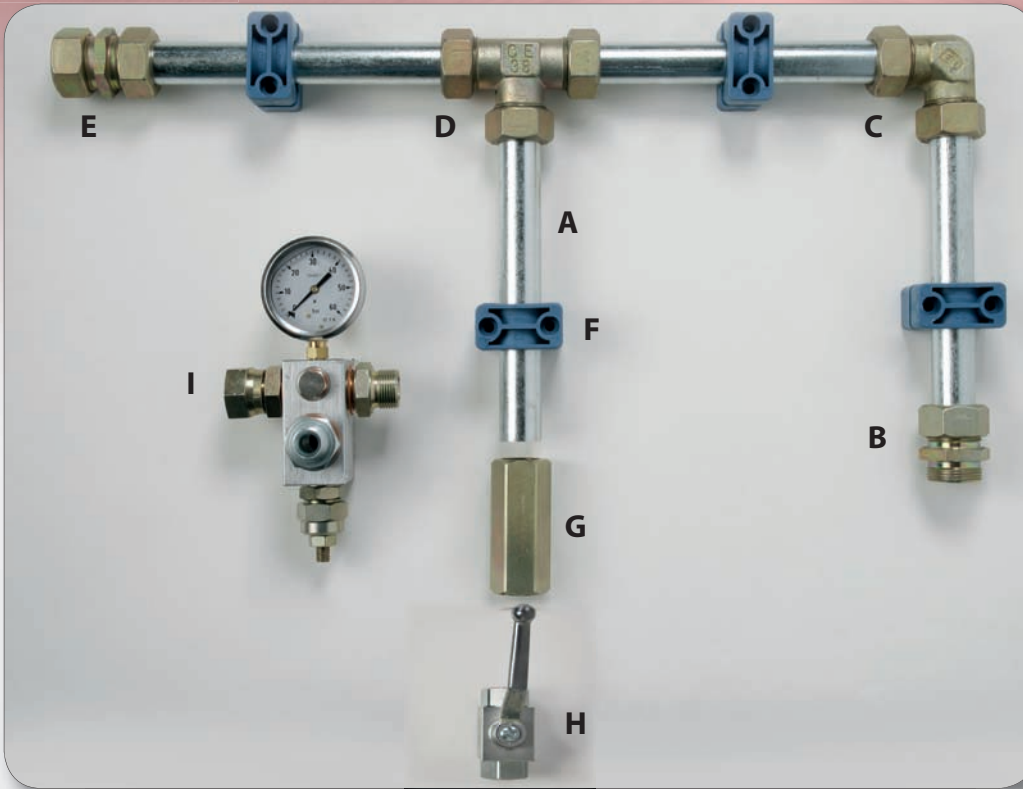
If you would like to see our complete range of pipework components and fittings including all essential technical details, please ask for our specialized OFC catalogue!

OFC is our brand specialized in the production of valves and other hydraulic components.



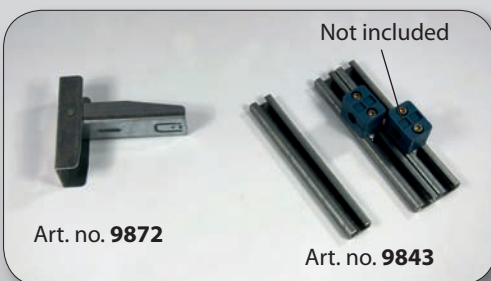
OFC offers a wide range of high quality products, among them pressure relief valves, non-return valves, differential control valves, unidirectional valves, compensator valves, straight and 90° - swivel joints, unidirectional and bidirectional flow regulator valves, high pressure ball valves, parachute valves with automatic shut-off, solenoid-actuated valves, etc.





- A** Hydraulic rigid seamless steel pipe, DIN 2391, max working pressure 200 bar, wall thickness 2 mm.
- B** Straight compression type fitting, DIN 2353.
- C** Elbow compression type fitting, DIN 2353.
- D** T - compression type fitting, DIN 2353.
- E** Intermediate compression type fitting, DIN 2353.
- F** Fixation clamp.
- G** Non-return valve.
- H** Shut-off valve, M-F.
- I** Pressure relief valve.

Type	Ø 18	Ø 25	Ø 28	Ø 35	1/2"	3/4"	1"
A	Art. no. 9818	Art. no. 9825	Art. no. 9828	Art. no. 9838	-	-	-
B	Art. no. 9839	Art. no. 9847	Art. no. 9851	Art. no. 9855	-	-	-
C	Art. no. 9840	Art. no. 9846	Art. no. 9850	Art. no. 9854	-	-	-
D	Art. no. 9858	Art. no. 9848	Art. no. 9852	Art. no. 9856	-	-	-
E	Art. no. 9859	Art. no. 9845	Art. no. 9849	Art. no. 9853	-	-	-
F	Art. no. 9841	Art. no. 9844	Art. no. 9842	Art. no. 9857	-	-	-
G	-	-	-	-	Art. no. 6641	Art. no. 6643	Art. no. 6640
H	-	-	-	-	Art. no. 7241	Art. no. 7240	Art. no. 7239
I	-	-	-	-	Art. no. 2259	Art. no. 2260	Art. no. 2258

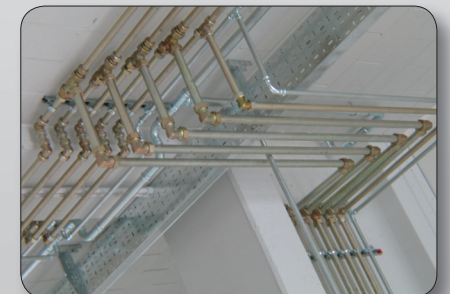


Art. no. **9843**

Metal bar 28x30 mm, suitable for the mounting of fixation clamps (F).

Art. no. **9872**

Metal L - bracket, suitable for the fixation overhang of rigid pipes.



Art. no. **9817**

Adhesives for the indication of the different liquids, to be applied on the pipes. Dimensions: 150x30 mm. The standard versions available are:

- OIL 1
- OIL 2
- OIL 3
- WASTE OIL
- ANTIFREEZE
- WASTE ANTIFREEZE
- AIR
- WATER

Adhesives with different or customized descriptions are available as of a minimum order of 50 pieces.



Pressure relief valve, suitable for lubricants pipeworks. Body in aluminium alloy and cartridge in galvanized steel.

Includes glycerin manometer with graduation 0 – 60 bar and regulation screw for the selection of the max. applicable pressure.

Connections (BSP): inlet F – outlet M.



Art. no.	Diameter	Regulation range	Max flow rate	Max pressure
2259	1/2" BSP	from 5 to 50 bar	70 l/min	70 bar
2260	3/4" BSP	from 5 to 50 bar	80 l/min	70 bar
2258	1" BSP	from 5 to 50 bar	90 l/min	70 bar



Non-return valve with high pressure gate valve, suitable for lubricants pipeworks. Body in galvanized steel, on demand also in stainless steel. Opening pressure 0,5 bar (on demand also 4 bar or 8 bar). Connections (BSP): inlet F – outlet F.

Art. no.	Diameter	Max pressure	Max flow rate	Dimensions (mm)
6639	1/4" BSP	400 bar	30 l/min	58 x 21 x 19
6641	1/2" BSP	350 bar	90 l/min	71 x 33 x 30
6643	3/4" BSP	300 bar	130 l/min	83 x 40 x 36
6640	1" BSP	280 bar	180 l/min	106 x 57 x 50
6648	1' 1/4" BSP	260 bar	250 l/min	125 x 63 x 55



Pressure reduction valve with high pressure gate valve, suitable for lubricants pipeworks. Body in galvanized steel, on demand also in stainless steel.

Connections (BSP): inlet F – outlet F.

Art. no.	Diameter	Regulation range	Max pressure	Max flow rate
6650	1/2" BSP	from 5 to 50 bar	320 bar	45 l/min
6651	3/4" BSP	from 5 to 50 bar	300 bar	85 l/min
6652	1" BSP	from 5 to 50 bar	250 bar	140 l/min



Parachute valve for lubricants pipeworks: blocks automatically the flow of lubricants inside of the pipework in case of leakages caused by failures or cracks of pipe components. Body in galvanized steel.

Art. no.	Diameter	Regulation range	Max pressure	Max flow rate
6670	1/2" BSP	from 10 to 70 l/min	350 bar	80 l/min
6671	3/4" BSP	from 30 to 140 l/min	350 bar	150 l/min
6672	1" BSP	from 40 to 170 l/min	350 bar	180 l/min



Art. no. **2257**

Pressure relief valve for pneumatic pumps of series POWER BULL; regulation range 0 – 50 bar.



High pressure ball valve, with full port and lever handle, suitable for lubricants pipeworks. Body in galvanized steel. Connections (BSP): inlet F – outlet F.

Art. no.	Diameter	Max flow rate	Max pressure
7244	1/4" BSP	30 l/min	500 bar
7242	3/8" BSP	50 l/min	500 bar
7241	1/2" BSP	80 l/min	500 bar
7240	3/4" BSP	120 l/min	350 bar
7239	1" BSP	160 l/min	350 bar
7238	1' 1/4" BSP	160 l/min	280 bar



Flow regulator valve, conical type, unidirectional. Body in galvanized steel. Connections (BSP): inlet F – outlet F.

Art. no.	Diameter	Regulation range	Max pressure	Max flow rate
6654	1/2" BSP	from 0 to 50 l/min	350 bar	50 l/min
6655	3/4" BSP	from 0 to 80 l/min	300 bar	80 l/min
6656	1" BSP	from 0 to 110 l/min	250 bar	110 l/min



Flow regulator valve, 90° - elbow type, unidirectional. Body in galvanized steel. Connections (BSP): inlet F – outlet F.

Art. no.	Diameter	Regulation range	Max pressure	Max flow rate
6660	1/2" BSP	from 0 to 50 l/min	320 bar	50 l/min
6661	3/4" BSP	from 0 to 80 l/min	300 bar	80 l/min
6662	1" BSP	from 0 to 110 l/min	250 bar	110 l/min



Swivel joint, straight type, with ball valve, self – lubricating. Body in galvanized steel, on demand also in stainless steel AISI 304. Connections (BSP): inlet F – outlet F.

Art. no.	Diameter	Max static pressure	Max dynamic pressure	Max flow rate
6690	1/4" BSP	400 bar	300 bar	25 l/min
6691	1/2" BSP	360 bar	220 bar	80 l/min
6692	3/4" BSP	310 bar	200 bar	120 l/min
6693	1" BSP	280 bar	150 bar	150 l/min
6694	1' 1/4" BSP	250 bar	150 bar	200 l/min



Swivel joint, 90° - type, with ball valve, self – lubricating. Body in galvanized steel, on demand also in stainless steel AISI 304. Connections (BSP): inlet F – outlet F.

Art. no.	Diameter	Max static pressure	Max dynamic pressure	Max flow rate
6695	1/4" BSP	400 bar	300 bar	25 l/min
6696	1/2" BSP	360 bar	220 bar	80 l/min
6697	3/4" BSP	310 bar	200 bar	120 l/min
6698	1" BSP	280 bar	150 bar	150 l/min
6699	1' 1/4" BSP	250 bar	150 bar	200 l/min