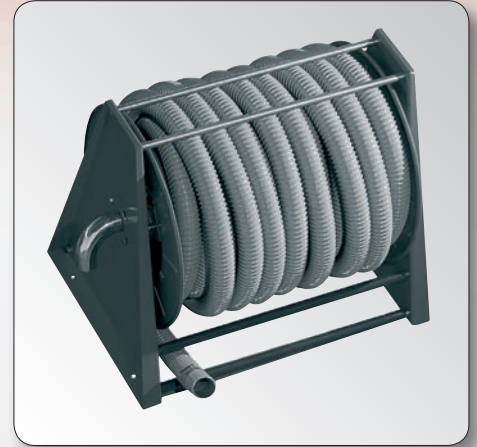




Art. no. **9078**

Automatic rewind, spring-driven hose reel, in painted steel, provided for the suction of air or dust through suitable hoses with int. \varnothing 50 mm (2") and a max length of 20 m. The hose reel is supplied without hose.

On demand the required hoses are also available.



Art. no. **9078**

Art. no.	Connection	Hose reel material	Weight	Dimensions (LxWxH) (mm)
9078	Int. \varnothing 50 mm	Carbon steel	40 kg	600 x 700 x 800



Art. no. **9578**

Automatic rewind, spring-driven hose reel, in stainless steel AISI 304, provided for the suction of air or dust through suitable hoses with int. \varnothing 50 mm (2") and a max length of 20 m. The hose reel is supplied without hose.

On demand the required hoses are also available.



Art. no. **9578**

Art. no.	Connection	Hose reel material	Weight	Dimensions (LxWxH) (mm)
9578	Int. \varnothing 50 mm	Stainless steel AISI 304	40 kg	600 x 700 x 800

