

www.mainpowerhyd.com

MAINTENANCE PRODUCTS



SAPPHIRE BEARING GREASES

WIRE ROPE LUBRICANTS

CHAIN LUBRICANTS

ANTI SEIZE PRODUCTS

CORROSION PROTECTION

OPEN GEAR LUBRICANTS



INDUSTRIAL CLEANERS

ASSEMBLY & DRY FILM LUBRICANTS

GEAR, COMPRESSOR & HYDRAULIC OILS

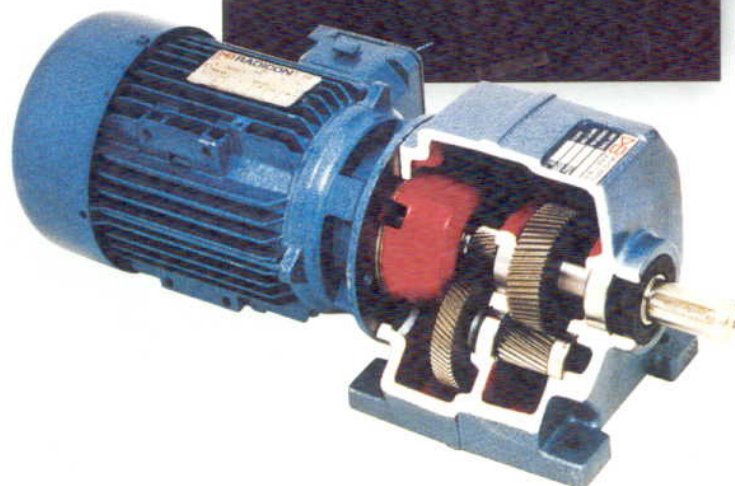
GENERAL PURPOSE & ANCILLARY PRODUCTS

KILOPOISE

FOMBLIN

SPECIALIST GREASES

AEROSPEC



SAPPHIRE BEARING GREASES

The ROCOL SAPPHIRE bearing grease range will provide effective long term lubrication and meet the ever increasing needs of today's production environment. There are now 13 key greases under the SAPPHIRE banner designed to encompass the widest possible range of industrial operating conditions. The new SAPPHIRE bearing greases provide industry with an easily identifiable range of high performance lubricants, which have been developed to extend bearing life, provide superior corrosion protection and to be suitable for all bearing types.

SAPPHIRE 2



"SAPPHIRE 2 last 3 times longer than conventional multi-purpose bearing greases." This revolutionary high performance multi-purpose multi-complex soap grease has excellent load carrying capability and corrosion resistant properties, and will significantly extend relubrication intervals. Temperature range -30°C to +150°C. NLGI 2. The blue colour enables easy identification in use.

Pack Size	Product Code
400gm	12171
5kg	12176
18kg	12175
50kg	12178

SAPPHIRE 1

SAPPHIRE 1 has all of the performance characteristics of SAPPHIRE 2 and is recommended for remote lubrication or long pipe run applications. Temperature range -30°C to +150°C. NLGI 1.

Pack Size	Product Code
400gm	12601
5kg	12606
18kg	12614

SAPPHIRE 000

SAPPHIRE 000 is recommended and approved for use in centralised lubrication systems and for grease filled gearboxes. Temperature range -30°C to +100°C. NLGI 000.

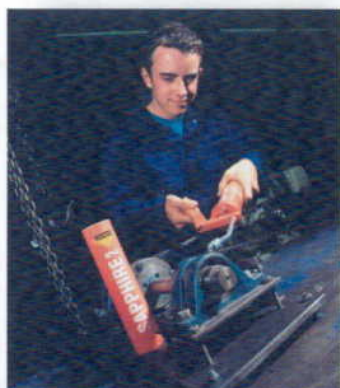
Pack Size	Product Code
5kg	12276
18kg	12284

SAPPHIRE PREMIER (Formerly Sapphire Hi-Temp 2)



A PTFE fortified synthetic grease for bearings operating at high temperatures and speeds. It is designed for the effective lubrication and protection of all types of ball, roller, plain bearings at elevated temperatures. Sapphire Premier is also suitable as an electrical contact lubricant. Temperature range -50°C to +200°C. NLGI 2.

Pack Size	Product Code
380gm	12471
4kg	12475
18kg	12474



SAPPHIRE LO-TEMP 2

A semi-synthetic multi complex soap grease developed to provide low start up and running torques at temperatures as low as -50°C. SAPPHIRE LO-TEMP offers high resistance to load and wear and is recommended for use with plain or anti friction bearings. Temperature range -50°C to +120°C. NLGI 2.

Pack Size	Product Code
400gm	12741
4.5kg	12745
18kg	12744



SAPPHIRE AQUA 2

A soap thickened bearing grease designed to give excellent resistance to water washout. SAPPHIRE AQUA will provide exceptional corrosion protection and long term lubrication for bearings that are operating in water or subjected to continual washing by water. Temperature range -20°C to +150°C. NLGI 2.

Pack Size	Product Code
380gm	12751
4kg	12755
18kg	12754



SAPPHIRE HI-LOAD 2

A multi complex soap thickened grease formulated to provide protection against heavy loads and vibration. SAPPHIRE HI-LOAD contains molybdenum disulphide and will extend relubrication intervals. Suitable for all bearing types. Temperature range -30°C to +150°C. NLGI 2.

Pack Size	Product Code
400gm	12761
5kg	12765
18kg	12764



SAPPHIRE HI-PRESSURE (Formerly MTS1000)

A clay thickened grease containing a high level of molybdenum disulphide suitable for the lubrication of plain bearings operating under heavy loading. SAPPHIRE HI-PRESSURE will reduce wear and offers excellent corrosion protection. Temperature range -20°C to +150°C. NLGI 2.

Pack Size	Product Code
500gm	12013
5kg	12016
18kg	12024



SAPPHIRE HI-SPEED 2

A unique synthetic based soap grease which extends the boundaries of high speed greases. SAPPHIRE HI-SPEED 2 has a maximum speed rating of 1.25×10^6 dmN coupled with excellent load carrying capacity and is recommended for use on machine tool spindles, textile spinning machines, aerospace and other high speed bearing applications. Temperature range -40°C to +120°C. NLGI 2.

Pack Size	Product Code
380gm	12051
450kg	12053
4.5kg	12056
18kg	12055



SAPPHIRE EXTREME (Formerly BRB-HT)

A semi-synthetic organically modified clay thickened grease containing molybdenum disulphide. This non-melting grease provides excellent resistance to high temperature, heavy loading and vibration. SAPPHIRE EXTREME is suitable for both plain and anti friction bearings. Temperature range -10°C to +235°C (intermittent temperatures to +250°C). NLGI 1/2.

Pack Size	Product Code
400gm	12211
5kg	12216
18kg	12214



Product Range

SAPPHIRE ENDURE (Formerly BG741)

An extremely long life PFPE grease thickened with PTFE for use up to temperatures of +280°C and where chemical contamination is a problem. SAPPHIRE ENDURE is highly stable at elevated temperatures and has extreme chemical and solvent resistance. Temperature range -25°C to +280°C. NLGI 2.

Pack Size	Product Code
100gm	12330
1kg	12334
5kg	12336



SAPPHIRE AQUA-SIL (Formerly MX22)



A silicone grease with excellent high temperature resistance. UK Water Byelaws Scheme approved for use with potable water. Good resistance to chemicals, oils, water and gases. Does not affect most rubbers and plastics.

SAPPHIRE AQUA-SIL is recommended for long term lubrication of bearing, slides, valves operating in extremes of temperature where contamination by chemicals, oil or potable water is possible. It can also be used as o-seal ring lubricants electronic insulators and grease refills. Temperature range -40°C to +200°C. NLGI 3/4.



Pack Size	Product Code
85gm	12251
500gm	12253
5kg	12256



SAPPHIRE AQUA-SIL HI-LOAD (Formerly MX66)

A high load silicone grease which contains molybdenum disulphide. UK Water Byelaws Scheme approved for use with potable water. Excellent high temperature resistance. Temperature range -40°C to +200°C (Short periods +220°C). SAPPHIRE AQUA-SIL HI-LOAD is recommended for the lubrication of bearings, slides and valves operating under heavy loads and in aggressive environments. NLGI 3/4.



Pack Size	Product Code
500gm	12263
5kg	12266

SAPPHIRE MULTI-PURPOSE GREASE - Various Methods of application

In addition to the conventional cartridge, tin, pail and drum, SAPPHIRE multi purpose grease is available in 3 distinctive applicators.

SAPPHIRE SPRAY GREASE

- Aerosol applied where conventional application methods are prohibitive.

Pack Size	Product Code
400ml	34305



SAPPHIRE AUTOLUBE

- Single point automatic lubricator
- Simple to install
- Up to 3 years grease supply
- Consistent delivery
- Replaceable grease cartridges
- Contains Sapphire 1 Triple Life Bearing grease



Product Type	Pack Size	Product Code
Sapphire Autolube Complete	120ml	12604
Sapphire Autolube Refill	120ml	12600

NEW

SAPPHIRE PREMIER UNILUBE

- Gas generated automatic lubricator
- Up to 12 months automatic lubrication
- Suitable for higher speed and temperature applications
- Contains SAPPHIRE Premier
- Disposable



Product Type	Pack Size	Product Code
Sapphire Premier Unilube	100ml	12810

NEW

SAPPHIRE 1 UNILUBE

- Gas generated automatic lubricator
- Up to 12 months automatic lubrication
- Operates in any position -even under water
- Intrinsically safe
- Contains SAPPHIRE 1 Triple Life Bearing grease
- Disposable



Product Type	Pack Size	Product Code
Sapphire 1 Unilube	100ml	12710

SAPPHIRE PRODUCT SELECTOR

The choice of grease will depend upon a number of factors, including the application, operating conditions and the environment.

Product selection is simplified with the new comprehensive ROCOL SAPPHIRE range, and together we are committed to providing you with the correct choice of lubricant to maximise operating efficiency, even in the harshest environments.

For further information on the SAPPHIRE bearing grease range or product selection, you can welcome to contact ROCOL FAR EAST LIMITED.

Products Description	TEMPERATURE RANGE °C	NLGI	SPEED	LIGHT DUTY	HIGH LOAD	FOOD	WATER	VIBRATION	CHEMICAL CONTACT	PLAIN BEARING	ANTI-FRICTION BEARING	MULTI PURPOSE	POTABLE WATER
SAPPHIRE 2	-30°C to +150°C	2			*					*	*	*	
SAPPHIRE 1	-30°C to +150°C	1			*					*	*	*	
SAPPHIRE 000	-30°C to +100°C	000			*					*	*		
SAPPHIRE HI-SPEED 2	-40°C to +120°C	2	*								*		
SAPPHIRE PREMIER	-50°C to +200°C	2	*							*	*	*	
SAPPHIRE LO-TEMP	-50°C to +120°C	2			*			*		*	*		
SAPPHIRE HI-LOAD	-30°C to +150°C	2			*					*			
SAPPHIRE HI-PRESSURE	-20°C to +150°C	2			*					*	*	*	
SAPPHIRE EXTREME	-10°C to +235°C	1/2			*			*		*			
SAPPHIRE ENDURE	-25°C to +280°C	2			*	*	*		DIRECT	*	*		
SAPPHIRE AQUA 2	-20°C to +150°C	2					*			*	*	*	
SAPPHIRE AQUA-SIL	-40°C to +200°C	3/4		*			*		TRACE				*
SAPPHIRE AQUA-SIL HI-LOAD	-40°C to +200°C	3/4					*		TRACE	*	*		*
FOODLUBE UNIVERSAL 2 #	-50°C to +160°C	2			*	*	*			*	*	*	
FOODLUBE UNIVERSAL 0 #	-50°C to +160°C	0			*	*	*			*	*	*	
FOODLUBE UNIVERSAL 000 #	-50°C to +160°C	000			*	*	*			*	*		
FOODLUBE HI-TEMP #	-20°C to +200°C	2				*	*		TRACE	*	*		

For more detailed information, please refer to Foodlube Product Range Catalogue.



SAPPHIRE PRODUCTS - TECHNICAL DATA SUMMARY

Product Description	Appearance	Base Oil	Base oil viscosity cSt@		Thickener	Solid Lubricant EP	NLGI No.	Operating Temperature	Work Penetration (IP50)	Timken 'OK' (IP326) (ASTM D2509)	Shell Four Ball Performance (IP239)(ASTM D2596)		Drop Point (°C)	Corrosion Test (Emcor) (IP220)	Water Washout Test% (IP215) (ASTM D1264)	dmN Factor
			40°C	100°C							Wear Load (kg)	Weld Load (kg)				
SAPPHIRE 2	Smooth soft blue	Mineral oil	180	17	Multi-complex	EP	2	-30°C to +150°C	290-320	60	130	>800	>200	0:0	2%	350,000
SAPPHIRE 1	Smooth soft blue	Mineral oil	180	17	Multi-complex	EP	1	-30°C to +150°C	310-340	60	120	>800	>200	0:0	4%	350,000
SAPPHIRE 000	Smooth soft blue	Mineral oil	180	17	Multi-complex	EP	000	-30°C to +100°C	445-475	50	65	600	>200	-	-	400,000
SAPPHIRE HI-SPEED 2	Light brown	Synthetic (PAO/D-EST)	11	2.9	Lithium complex	EP	2	-40°C to +120°C	265-295	-	-	200	>230	0:0	1%	1,250,000
SAPPHIRE PREMIER	Beige	Synthetic (Hydrocarbon oil)	50	8	Lithium complex	EP	2	-50 c to +200°C	265-295	-	68	355	>260	0:0	-	500,000
SAPPHIRE LO-TEMP 2	Smooth beige	Synthetic (Mineral oil/PAO)	69	8.5	Multi-complex	EP	2	-50°C to +120°C	265-295	-	128	>800	>230	0:0	2%	450,000
SAPPHIRE HI-LOAD 2	Smooth blue-black	Mineral oil	180	17	Multi-complex	MoS2	2	-30°C to +150°C	290-320	70	144	>800	>200	0:0	2%	350,000
SAPPHIRE HI-PRESSURE	Black	Mineral oil	184	15	Organically modified clay-bentone	MoS2	2	-20°C to +150°C	265-295	-	68	355	-	-	2%	200,000
SAPPHIRE EXTREME	Black	Semi-synthetic (Mineral oil/EST)	125	14	Organically modified clay-bentone	MoS2	1/2	-10°C to +235°C	265-295	-	55	282	-	0:0	2%	350,000
SAPPHIRE ENDURE	Smooth white	Synthetic (PPPE)	420	40	PTFE	PTFE	2	-25°C to +280°C	265-295	-	106	501	>280	0:0	0.5%	-
SAPPHIRE AQUA 2	Translucent tacky	Mineral oil	120	11	Aluminum complex	-	2	-20°C to +150°C	265-295	45	-	315	>250	0:0	0.5%	400,000
SAPPHIRE AQUA-SIL	Translucent	Synthetic (Silicone)	700	380	Silica	MoS2	3/4	-40°C to +200°C	190-250	-	-	-	-	0:0	0.2%	100,000
SAPPHIRE AQUA-SIL HI-LOAD	Smooth grey-black	Synthetic (Silicone)	700	380	Silica	MoS2	3/4	-40°C to +200°C	190-250	-	41	180	-	0:0	0.2	100,000

WIRE ROPE LUBRICANTS

Wire ropes are frequently required to operate in the most severe conditions, often constantly exposed to the elements. ROCOL wire rope lubricants are designed to penetrate to the rope core, protecting and lubricating inside and out to extend safe working life, reducing unplanned down time and replacement costs.



WIRE ROPE DRESSING (FORMERLY RD105)



A tenacious, semi-fluid, non-melting grease, containing MoS₂ (moly) which penetrates to the rope core providing excellent lubricity and high load carrying capabilities. Repels water and protects against corrosion, even in sea water environments. Easily applied by brush - even at low temperatures. Use on all non-friction drive type ropes in hostile conditions on drag lines, cranes, derricks, submersible platforms, steelworks equipment, tower cranes, excavators, etc.. Temperature range -30°C to +100°C. 4-Ball Weld Load 225kg. Wear Load Index 54kg. NLGI 00/000.

Pack Size	Product Code
4kg	20026
14kg	20027



WIRE ROPE SPRAY

Aerosol applied wire rope lubricant containing MoS₂ (moly) and other anti-wear additives. Leaves a film which gives similar operating characteristics to ROCOL WIRE ROPE DRESSING. Temperature range -30°C to +100°C. 4-Ball Weld Load 225kg. Wear Load Index 54kg.

Pack Size	Product Code
400ml	20015



WIRE ROPE FLUID (FORMERLY RD205)

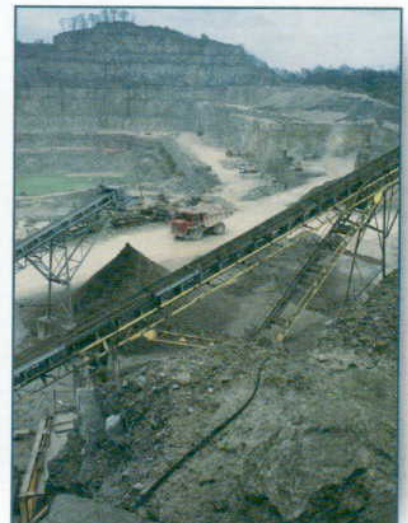
Dewatering rope lubricant in solvent base which evaporates to leave a long lasting protective film containing MoS₂ (moly) similar to ROCOL WIRE ROPE DRESSING. Applied by compressed air spray, brush or swab. Suitable for application to wet ropes. Temperature range -30°C to +100°C. 4-Ball Weld Load 225kg. Wear Load Index 54kg.

Pack Size	Product Code
5lt	20046
20lt	20045



CASE STUDY

Product :	WIRE ROPE DRESSING (FORMERLY RD105)
Company :	Laporte Fluorides, Quarrying
Application:	Wire ropes on hoists and cranes around the quarry
Identified Needs:	An easily applied rope lubricant that would withstand the corrosive and abrasive environment.
Benefits:	Wire Rope Dressing penetrates to the core of the rope providing total lubrication and protection. Non-tacky nature ensures no build up of contaminants.
Value to User:	Easy application and improved life expectancy from all ropes saves down time, maintenance and replacement costs.



Product Range

CHAIN LUBRICANTS

A comprehensive range of lubricants designed to rapidly penetrate chain links and pins and operate in a wide range of environments. Whatever the type of drive or conveyor chain in use, Rocol provides a lubricant to ensure trouble free operation - cutting expensive downtime and productivity loss.



CHAIN & DRIVE SPRAY

Multi purpose aerosol applied drive and conveyor chain lubricant. CHAIN & DRIVE SPRAY provides a thin water resistant film of temperature - resistant mineral oil held in a quick break foam. Use for the lubrication of drive and conveyor chains not fitted with automatic lubrication systems. Temperature range -30°C to +150°C.

Pack Size	Product Code
300ml	22001



CHAIN & DRIVE FLUID

Bulk fluid general purpose chain lubricant with good load carrying properties. Provides long term wet film lubrication, for extended chain life. Temperature range -15°C to +120°C.

Pack Size	Product Code
5lt	22306
20lt	22309



CHAINGUARD 230 (FORMERLY CL200)

High temperature wet film chain and conveyor lubricant, which provides long life wet film lubrication at high temperatures. Use for the lubrication of chains running continuously at temperatures up to +230°C on, drying machines, bakery ovens and paint stoving ovens. Temperature range, +10°C to +230°C.

Pack Size	Product Code
5lt	22255
20lt	22265
200lt	22259



CHAINGUARD 280 (FORMERLY CL280)

High temperature chain lubricant with good load carrying properties. Provides long term wet film lubrication at high temperatures. Use to lubricate conveyor chains and bearings operating either continuously or intermittently at high temperatures. Temperature range +10°C to + 280°C.

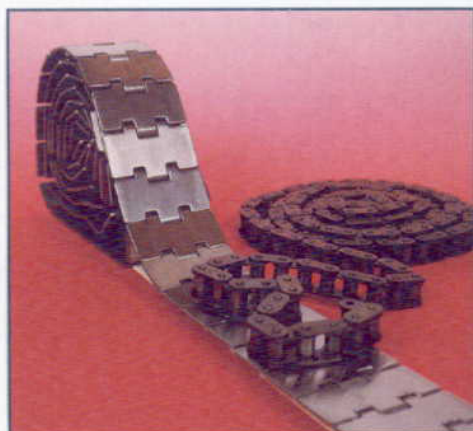
Pack Size	Product Code
5lt	22235
20lt	22236



CHAINGUARD 550 (FORMERLY L621)

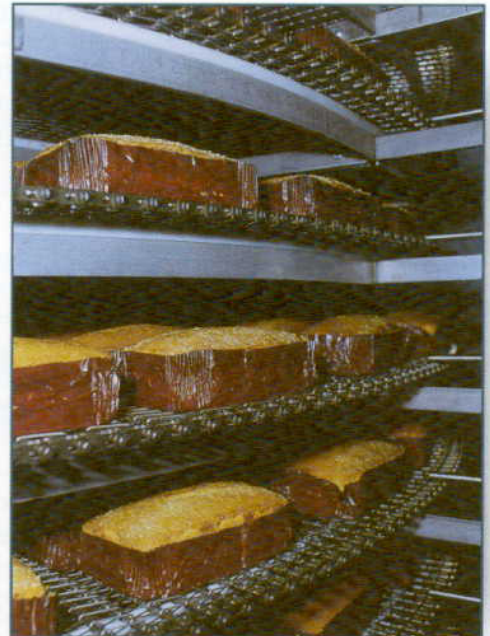
Very high temperature graphited synthetic chain lubricant. Use in high temperature environments where the risk of product contamination by the lubricant cannot be tolerated e.g. bakery oven chains. Temperature range -10°C to +550°C, wet film -10°C to +180°C, dry film +180°C to +550°C.

Pack Size	Product Code
5lt	22076
20lt	22075



CASE STUDY

Product :	CHAINGUARD 550 (FORMERLY L621)
Company :	R & K Wise, Bakers
Application:	Lubrication of drive chains on cake and bread ovens
Identified Needs:	Extend lubrication intervals on chains running up to 380°C
Benefits:	Lubrication intervals extended from every 2 days to 3 weeks. Reduction in wear indicated by chain no longer squeaking
Value to User:	20 maintenance hours per month saved and longer chain life



ROCOL CHAIN LUBRICATION SELECTION CHART

	TEMPERATURE RANGE °C (CONTINUOUS OPERATION)	WORKING CONDITIONS					
		GENERAL PURPOSE APPLICATION	HIGH LOAD	HUMID	WET	SOLID LUBRICANTS	FOOD GRADE
CHAIN & DRIVE SPRAY	-30°C to +150°C	*		**	**		
CHAIN & DRIVE FLUID	-15°C to +120°C	*		**	*		
CHAIN GUARD 230	+10°C to +230°C		*	*			
CHAIN GUARD 280	+10°C to +280°C			*			
CHAIN GUARD 550	-10°C to +550°C (Dry film above +180°C)		*			GRAPHITE	
FOODLUBE CHAIN FLUID#	-30°C to +150°C		*	**	*	HI-LOAD WHITE SOLIDS	YES
FOODLUBE CHAIN SPRAY#	-30°C to +150°C		*	**	**		YES

For more detailed information, please refer to Foodlube Product Range Catalogue.

Product Range

ANTI SEIZE PRODUCTS

Seizure of fasteners presents a major inconvenience in many repair and maintenance situations, adding to both the time and cost of the job. Rocol provide a range of premium quality anti-seize products which will protect fasteners against wet, dirty and hot conditions as well as from chemical attack, easing future dismantling thereby reducing downtime and costs.



ANTI-SEIZE COMPOUND (FORMERLY J166)

A copper based anti-seize paste containing a high level of metallic and lubricating solids. Use to prevent galling and seizure of screws, bolts, studs and other static threaded fasteners-particularly those subject to wet conditions and high temperatures. Temperature range -10°C to +1100°C.

Pack Size	Product Code
85gm	14030
500gm	14033
6kg	14035



ANTI - SEIZE SPRAY

Copper based aerosol applied anti-seize lubricant - similar to Anti-Seize Compound. Use to protect all kinds of threaded components where the convenience of aerosol application is preferred. Temperatures range -10°C to +1100°C

Pack Size	Product Code
400ml	14015



PENETRATING SPRAY

Powerful jet spray of penetrating oil containing MoS₂ (moly) helps release seized components affected by rust, dirt or scale and provides lubrication during dis-assembly. Film protects against damage and further corrosive attack.

Pack Size	Product Code
300ml	14021

CORROSION PROTECTION

Unprotected metal surfaces may be subject to attack by corrosion leading to problems ranging from unsightly staining through to component failure. Rocol corrosion preventatives protect such components, extending working life and reducing the need for rework and repair.



Z30 SPRAY AND FLUID

Long term, heavy duty corrosion inhibitor, dries to form a soft waxy transparent film providing protection for up to 2 years. Use on equipment in environments where corrosion prevention and lubrication are required on chains, gears, wire ropes, etc.. Temperature range -20°C to +110°C.

Product Type	Pack Size	Product Code
Spray	300ml	37020
Fluid	5lt	37022
Fluid	20lt	37028



Z5 FLUID

Highly versatile film which cleans, penetrates and displaces water. Provides light lubrication and corrosion protection and does not attract dirt or dust. Use to dry out electronic equipment and for day-to-day maintenance lubrication.

Pack Size	Product Code
5lt	37002
20lt	37008



Z25 FLUID

Long lasting, non drying lubricant providing corrosion protection for up to 1 year. Use to free seized metal parts and in applications where long lasting lubrication and corrosion protection is required.

Pack Size	Product Code
5lt	37012
20lt	37118

TOOL CORROSION PROTECTION



MOISTURE GUARD SPRAY AND FLUID (GREEN / CLEAR)

Almost dry film which is easily handled, protects against fingerprint corrosion and also provides residual lubrication for assembly. Displaces moisture - particularly effective in humid conditions and where condensation is a problem. Use for medium/long term indoor corrosion protection of bright metal components and mould tools during storage or shutdown. Salt Spray Test ASTM B117 750 hrs.(equivalent to 5-year indoor storage period). Corrosion protection period is up to 5 years.

Product Type	Pack Size	Product Code
Spray (green)	400ml	69012
Spray (clear)	400ml	69021
Fluid (green)	5lt	69006



OPEN GEAR LUBRICANTS

Open gears are used extensively across industry, particularly in high load dusty environments. Rocol OPEN GEAR lubricants are designed to reduce wear on gear teeth and protect against corrosion even in the most extreme environments, resulting in prolonged, efficient gear life. All Rocol open gear lubricants are bitumen free.



TUFGEAR SPRAY (FORMERLY Open Gear Spray)

Provides a thin water repellent film with good load carrying capabilities. Highly tenacious, will not throw off in operation. Use on small gear trains, gears on overhead equipment and for application through guards onto moving gears. 4-Ball Weld Load 800kg. Wear Load Index 160kg. Temperature range -10°C to +100°C.

Pack Size	Product Code
400ml	18105



TUFGEAR UNIVERSAL

A heavy duty open gear lubricant and organically modified clay thickened grease based on a blend of high viscosity oils and high load carrying solid lubricants. Tufgear Universal has been developed to deal with the loads found in the largest gears and to withstand the aggressive environments within which they operate, including gears that are exposed to strong underwater currents. It is easy to apply and suitable for all types of open gears. Applies a water resistant thin film with excellent load carrying capabilities and good anti-wear characteristics which resists drip or throw off. NLGI 2. 4-Ball Weld Load 800kg. Wear Load Index 120kg. Temperature range -40°C to +120°C.

Pack Size	Product Code
300g	18303
5kg	18305
15kg	18307



TUFLUBE ALLWEATHER

Extremely adhesive water resistant lubricant with excellent water displacing properties which provides good corrosion protection and long term lubrication. Can be applied to wet surfaces. Use on sliding surfaces, gears, slow speed bearings and outdoor equipment or wherever a heavy duty lubricant is required, particularly in wet or humid conditions. NLGI 0/1. 4-Ball Weld Load 800kg. Wear Load Index 107kg. Temperature range -30°C to +70°C.

Pack Size	Product Code
400gm	18271
5kg	18276
18kg	18244



Product Range

INDUSTRIAL CLEANERS

Effective cleaning is an essential part of most maintenance tasks. Rocol provide a range of cleaners designed to meet the requirements of all jobs.



HEAVY DUTY CLEANER SPRAY & FLUID

A powerful, non-chlorinated, slow evaporating solvent blend which can be emulsified with water if required allowing built up dirt and grease to be easily removed by either wiping or water washing. Leaves no oily film. Harmless to most plastics and paints.

Product Type	Pack Size	Product Code
Spray	300ml	34011
Fluid	5lt	34014



INDUSTRIAL CLEANER RAPID DRY SPRAY

Powerful fast evaporating non-chlorinated solvent cleaner, dries in seconds to leave a residue free surface

Pack Size	Product Code
300ml	34131



FOAM CLEANER SPRAY

Universal water based, fast acting foaming cleaner which cuts through grease, grime and dirt. Free from chlorinated solvents. Foodsafe-contains only FDA listed ingredients and meets the former requirements of the USDA. NSF A1 Registered.

	
Pack Size	Product Code
400ml	34141



ULTRACLEAN 2000 FLUID

Non-chlorinated water based cleaner - effectively cuts through grease, grime and dirt and rinses clean away to leave no residue. Economical in use -1 part Ultraclean 2000 can be diluted with up to 100 parts of water.

Pack Size	Product Code
5lt	34166
20lt	34168

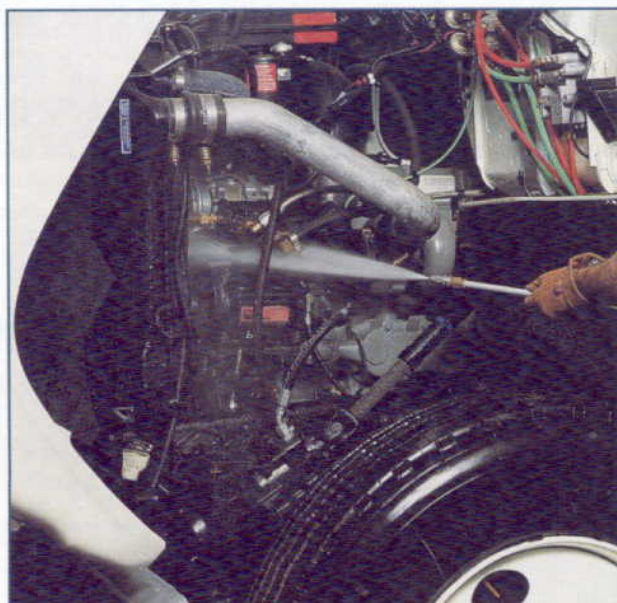


ELECTRA CLEAN SPRAY

ROCOL Electra Clean spray is a high performance cleaner suitable for electrical components and equipment, including contacts, switches, motors and windings. In addition to a high level of cleaning efficiency, Electra Clean spray will evaporate completely leaving no residue to affect conductivity. NSF K2 Registered.

NOTE: Do not use on live or energised equipment.

	
Pack Size	Product Code
300ml	34066



ASSEMBLY & DRY FILM LUBRICANTS

Provide either a totally or almost dry thin MoS₂ (moly) film of exceptionally high load carrying strength for application in areas where conventional lubricants fail or are inappropriate. Typically these products are used to prevent galling and pick up on assembly, to avoid contamination of a finished product or to lubricate in very arduous conditions.



DRY MOLY SPRAY (FORMERLY Anti Scuffing Spray)

Aerosol applied thin, dry film of resin bonded MoS₂ (moly) which withstands high loads and temperatures. Does not pick up dirt and dust. Use as a dry film lubricant on slides, gears, plain bearings, as an anti-seize on precision threaded components and in applications where contamination of finished components cannot be tolerated. Temperature range up to + 450°C.

Pack Size	Product Code
400ml	10025



DRY MOLY PASTE (FORMERLY Anti Scuffing Paste)

A soft paste with high MoS₂ (moly) content which can be rubbed or burnished on to the surface to give a dry bonded film with high load carrying capacity. Use for dry film lubrication where product contamination cannot be tolerated and as a lubricant or anti-seize agent on precision threads. It can also be used as an excellent lubricator for the valves of oil field drilling equipment (Christmas tree). Temperature range up to +450°C.

Pack Size	Product Code
100g	10040
750g	10046
18kg	10047



DRY MOLY FLUID

Air bonded dry film lubricant - a dispersion of MoS₂ (moly) in a solvent which air dries to leave a resin bonded lubricating film. Temperature up to +450°C.

Pack Size	Product Code
5lt	10205

ASSEMBLY & DRY FILM SELECTION CHART:

APPLICATION	METHOD	PRODUCT
ASSEMBLY / RUNNING IN	AEROSOL	DRY MOLY SPRAY
DRY FILM LUBRICATION	AEROSOL	DRY MOLY SPRAY
	BRUSH/SWAB	DRY MOLY PASTE
	BRUSH/DIP/SPRAY	DRY MOLY FLUID

Product Range

SAPPHIRE GEAR, COMPRESSOR AND HYDRAULIC OILS

ROCOL provide a comprehensive range of gear, compressor and hydraulic oils, which are designed to provide extended service life, thereby reducing maintenance time and costs.



SAPPHIRE HI-TORQUE

A range of high performance gear oils available in the viscosity grades ISO VG 100 / 220 / 320 / 460 / 680. SAPPHIRE HI-TORQUE features the unique Rocol Start Up Protection System (SUPS) which reduces wear, provides superior load carrying capabilities and stability at high temperatures. Approved for use by David Brown Gearboxes. Temperature range -20°C to +120°C. 4-Ball Weld Load 560kg. Timken Ok Load 70lb.

ISO VG	Pack Size	Product Code
100	5lt	21006
	20lt	21005
220	5lt	21016
	20lt	21015
320	5lt	21026
	20lt	21025
460	5lt	21036
	20lt	21035
680	5lt	21046
	20lt	21045



SAPPHIRE HI-POWER

Sapphire Hi-Power is suitable for all types of rotary screw, vane and reciprocating compressors which require oil lubrication. It is also a range of thermally stable, hydraulic oils of ISO VG 22, 32, 46, 68 & 100 classification, designed to resist breakdown at high temperatures, provide excellent corrosion protection thereby giving increased service life and extended oil change intervals. The unique low carry over (LCO) system designed to reduce oil carry over, foaming and increase service life. Temperature range -20°C to +120°C.

ISO VG	Pack Size	Product Code
22	20lt	52525
	200lt	52529
32	20lt	52545
	200lt	52549
46	20lt	52555
	200lt	52559
68	20lt	52565
	200lt	52569
100	20lt	52575
	200lt	52579



Sapphire Hi-Power also meets the following standards:

COMPRESSORS:

DIN 51506 (VBL,VCL,VDL)

ISO/DP 6521(DAA,DAB,DAH,DAG)

HYDRAULICS:

Vickers 1-286S,M-2950-S

Cincinnati Milacron P-68,P-69,P-70

Jeffrey No.87

U.S. Steel 127,136

General Motors LH-04-1,LH-06-1,LH-15-1

Denison HF-1,HF-2,HF-0

Lee Norse 100-1

Ford M-6C32



GENERAL PURPOSE AND ANCILLARY PRODUCTS

The ROCOL range of general purpose maintenance products are designed to be an easy to use and cost effective part of any maintenance program.



SAPHIRE PRECISION LUBE SPRAY (REPLACES ultralube spray)

Ultra high performance synthetic maintenance lubricant with PTFE. SAPHIRE Precision Lube is designed to provide excellent lubrication, penetration and corrosion protection in a wide range of industrial applications. Temperature range -55°C to +250°C

Pack Size	Product Code
400ml	34341



PRECISION SILICONE SPRAY (FORMERLY SL)

Non toxic, colourless silicone lubricant providing a light lubricating film with wide temperature stability. Suitable for use as an anti-stick agent, and for the lubrication of slides, bearings and conveyors where cleanliness is essential. Also it can be used on sealing jaws, moulds, etc.. Temperature range -50°C to +200°C. NSF H1 Registered.



Pack Size	Product Code
400ml	34035



DRY PTFE SPRAY (FORMERLY IFL)

Non-sticking dry PTFE lubricant which gives a low friction, non-toxic, non-stick surface and reduces static. Use on cams, slides, open bearings and chutes, shears on food packaging or printing machinery. Also, Dry PTFE Spray is a non silicone dry film mould release agent. Temperature range -200°C TO +270°C. NSF H1



Pack Size	Product Code
400ml	34235



BELT DRESSING SPRAY



Belt dressing Spray is a non-toxic colourless tacky belt fluid designed for the treatment of all types of drive and conveyor belts. It provides a synthetic film, which adheres strongly to any belt material giving instant grip, prolong life of worn and glazed belts and preventing slippage. Belt Dressing Spray does not contain asphalt, resin, or oil. It conditions belts and prevents build up of dirt and grease. Temperature range +5°C to +100°C. NSF H1 Registered.

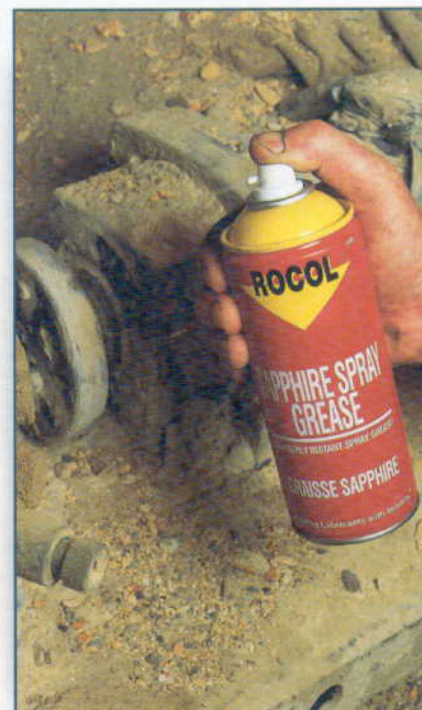
Pack Size	Product Code
300ml	34295



SAPHIRE SPRAY GREASE

Multi-purpose grease for maximum ease of application and convenience. Provides excellent lubrication and good corrosion protection over a wide temperature range. Temperature range -40°C to +200°C.

Pack Size	Product Code
400ml	34305



Product Range

SPECIALIST LUBRICANTS

In addition to the traditional renowned ROCOL product offering of metal cutting lubricants, bearing greases and maintenance consumables, ROCOL also provide a range of highly specialised lubricants which have been formulated to meet the requirements of niche industrial sectors which demand and expect superior product performance.

KILOPOISE

ROCOL Kilopoise is a range of extremely high viscosity fluid and grease lubricants which act in a manner which is the reverse of ordinary lubricants. ROCOL Kilopoise is designed for assemblies where a fine adjustment is produced by hand, where free motion is required to be damped and where sealing is required. Key areas of application are in the optical, medical, instrument, radio, television and electronic industries and typical applications include cameras, videos, CD loaders, surveying equipment, binoculars, doors and window hinges, electronic toys and vehicle glove compartments.

ROCOL Kilopoise lubricants are inert to acids and alkalis, non volatile and non corrosive, electrically non conductive, insoluble in water and most polar solvents and will maintain consistency and torque for long periods. ROCOL Kilopoise are available in light, medium and heavy viscosity ranges. The following gives an indication of the temperature range at which mechanisms can generally be operated.

TYPE	PRODUCT NAME	TEMPERATURE RANGE
Heavy Grade	KILOPOISE 0868, 0868GW	+5°C to +95°C
	KILOPOISE 0868S	+5°C to +200°C
Medium Grade	KILOPOISE 0031S	0°C to +200°C
Light Grade	KILOPOISE 0001, 0001GW	-7°C to +95°C

Other technical data:

- Base oil : synthetic hydrocarbon fluid
- Fluid viscosity : @25°C

		KILOPOISE	CENTIPOISE
Heavy Grade	0868	2.2	220,000
Medium Grade	0031	0.97	97,500
Light Grade	0001	0.25	25,000

- Drop point : GW grade - 95°C
S grade - 205°C
- Appearance : Fluids - Clear
Greases - Translucent, off-white



Product Type	Pack Size	Product Code
0001	2kg	36065
0001GW	2kg	36085
0031S	2kg	36135
0868	2kg	36015
0868GW	2kg	36045
0868S	2kg	36035

FOMBLIN

The ROCOL FOMBLIN range are perfluoro polyether based greases and oils designed to provide exceptional performance and which, dependant on grade are resistant to oxygen, vacuum, aggressive chemicals, acids, alkalis, solvents, water, oils and temperature extremes.

FOMBLIN products are suitable for supporting high loads, offer long life performance in bearings, slides, small gears, valves, etc. where extremes of performance are required.



FOMBLIN YVAC 3 GREASE
FOMBLIN OT20 GREASE
FOMBLIN UT18 GREASE
FOMBLIN RT15 GREASE

FOMBLIN YNX GREASE

- For use under vacuum conditions
- For use primarily with oxygen systems
- Suitable for a wide range of applications operating in hostile environments inc. oxygen systems.
- Assembly lubricant for use in oxygen, bromine and chlorine environments.

Product Type	Pack Size	Product Code
YVAC3	100gm	39011
OT20	100gm	39021
UT18	100gm	39031
RT15	100gm	39041
YNX	100gm	39081

Product Name	Appearance	Base Oil	Base oil viscosity cSt@		Thickener	Temperature Range	NLGI	Work Penetration (IP50)	Shell Four Ball Performance (IP239)(ASTM D2596) Weld Load (kg)	Specific Gravity 20°C	Drop point
			20°C	100°C							
Fomblin YVAC3	Soft white	PFPE	1500	40	PTFE	-20°C to +200°C	3	230-250	620	1.92	>280
Fomblin OT20	Soft white	PFPE	38	3.2	PTFE	-70°C to +100°C	2	265-295	500	1.87	>280
Fomblin UT18	Soft white	PFPE	470	16.5	PTFE	-30°C to +150°C	2	265-295	620	1.90	>280
Fomblin RT15	Soft white	PFPE	1200	33	PTFE	-20°C to +200°C	2	265-295	620	1.91	>280
Fomblin YNX	Grey smooth	PFPE	250	10	Hydrous Magnesium Silicate	-40°C to +22°C	1	280-310	560	1.90	NIL

SPECIALIST GREASES

HT70

Hydrocarbon polymer containing molybdenum disulphide which evaporates very slowly at high temperatures. ROCOL HT70 is designed for the lubrication of slow speed (less than 300rpm) plain and antifriction bearings operating at temperatures above +180°C where normal greases will fail and leave heavy deposits. Operating temperature +180°C to +300°C

Pack Size	Product Code
4kg	12106

ELECTROSPEC Compound

ROCOL Electrospec is a plastic compatible lubricating compound for electrical contacts, and is ideal for use in contacts susceptible to the effects of oxidation, corrosion or wear. Operating temperature +180°C to +300°C. The unique consistency of ROCOL Electrospec means that the compound self heals after the electrical contact has operated. NLGI 1/2.

Pack Size	Product Code
4.5kg	38956
50kg	38958



Product Range

AEROSPEC

A range of highly engineered greases which are approved and specified for use in aero military applications

AEROSPEC 100

Synthetic semi fluid grease.

Pack Size Product Code

4.5kg 06516

AEROSPEC 200

Low temperature soap based aerospace grease.

Pack Size Product Code

4.5kg 06506

12.5kg 06507

AEROSPEC 210

Low temperature grease containing graphite.

Pack Size Product Code

125gm 06530

AEROSPEC 250

Low temperature grease containing molybdenum disulphide.

Pack Size Product Code

3kg 06526

12.5kg 06527

AEROSPEC 300

Extended life general purpose soap based grease.

Pack Size Product Code

3kg 06326

3kg 06336

AEROSPEC 350 (formerly aerospec 305)

Long life general purpose aviation grease containing graphite.

Pack Size Product Code

3kg 06626

AEROSPEC 400

Multi purpose aerospec grease with excellent high temperature performance.

Pack Size Product Code

500gm 06633

AEROSPEC 533

A low temperature silicone based soap grease

Pack Size Product Code

1kg 06644



PRODUCT NAME	Appearance	Base Oil	Base Oil Viscosity cSt@		Thickener	NLGI	Temperature Range	Work Penetration	Shell Four Ball Performance (IP239)(ASTM D2596)		Lowest Temperature Torque (IP186)-73°Cm/Nm		Drop point (IP132)	Corrosion test (Emcor) (IP220)	Water washout test% (IP215)	UK/NATO SPECIFICATIONS
			40°C	100°C					Wear Load (kg)	Weld Load (kg)	Starting Torque	Running Torque				
Aerospec 100	Light brown semi fluid grease	Diester	10	3.5	Lithium Complex	-	-54°C to +120°C	-	-	-	-	-	-	-	-	ZFB 831
Aerospec 200	Smooth beige grease	Diester	8.6	2.5	Lithium Complex	2	-75°C to +120°C	265-295	84	450	190	130	>200	0:0	7.5	DEF STAN 91-53/2, JSD XG287, NATO G-354
Aerospec 210	Smooth black grease	Diester	8.6	2.5	Lithium Complex	1/2	-75°C to +120°C	270-310	-	-	190	130	>200	0:0	-	DEF STAN 91-85/1, JSD XG 273
Aerospec 250	Smooth blue/black grease	Diester	8.6	2.5	Lithium Complex	2	-75°C to +120°C	265-295	-	-	190	130	>200	0:0	-	DEF STAN 91-57/2, JSD XG 276
Aerospec 300	Smooth blown grease	Semi-synthetic	77	11	Lithium Complex	2	-40°C to +170°C	265-295	68	300	-	-	>200	0:0	1.0	DEF STAN 91-106, 91-12/1, JSD XG 291, XG 271, NATO Codes G-421 G 382
Aerospec 350	Smooth black grease	Semi-synthetic	77	11	Lithium Complex	2	-40°C to +170°C	265-295	-	-	-	-	>200	0:0	1	DEF STAN 91-54/1, NATO Codes G-355, JSD XG 285
Aerospec 400	Smooth beige grease	PAO	48	8	Lithium Complex	2	-54°C to +175°C	265-295	68	355	-	-	280	0:0	1.75	DEF STAN 91-06/1, JSD XG 294
Aerospec 533	Smooth light grey grease	Silicone	38	14	Lithium Complex	2	-73°C to +150°C	265-295	-	-	62.5	25.7	>200	0:0	-	DEF STAN 91-56/2, JSD XG 315, NATO Codes G-394

MAINTENANCE PRODUCTS

PRODUCT NAME	PACK SIZE	PRODUCT CODE	PAGE
AEROSPEC 100	4.5kg	06516	17
AEROSPEC 200	4.5kg/12.5kg	06506/06507	17
AEROSPEC 210	125gm	06530	17
AEROSPEC 250	3kg/12.5kg	06526/06527	17
AEROSPEC 300	3kg	06326	17
AEROSPEC 300	3kg	06336	17
AEROSPEC 350	3kg	06626	17
AEROSPEC 400	500gm	06633	17
AEROSPEC 533	1kg	06644	17
ANTI-SEIZE SPRAY	400ml	14015	9
ANTI-SEIZE COMPOUND	85gm/500gm/6kg	14030/14033/14035	9
BELT DRESSING SPRAY	300ml	34295	14
CHAIN & DRIVE SPRAY	300ml	22001	7
CHAIN AND DRIVE FLUID	5lt/20lt	22306/22309	7
CHAIN GUARD 230	5lt/20lt/200lt	22255/22265/22259	7
CHAIN GUARD 280	5lt/20lt	22235/22236	7
CHAIN GUARD 550	5lt/20lt	22076/22075	7
DRY MOLY FLUID	5lt	10205	12
DRY MOLY PASTE	100gm/750gm/18kg	10040/10046/10047	12
DRY MOLY SPRAY	400ml	10025	12
DRY PTFE SPRAY	400ml	34235	14
ELECTRA CLEAN SPRAY	300ml	34066	11
ELECTROSPEC COMPOUND	4.5kg/50kg	38956/38958	16
FOAM CLEANER SPRAY	400ml	34141	11
FOMBLIN OT20 GREASE	100gm	39021	16
FOMBLIN RT15 GREASE	100gm	39041	16
FOMBLIN UT18 GREASE	100gm	39031	16
FOMBLIN YVAC 3 GREASE	100gm	39011	16
FOMBLIN YNX GREASE	100gm	39081	16
HEAVY DUTY CLEANER FLUID	5lt	34014	11
HEAVY DUTY CLEANER SPRAY	300ml	34011	11
HT70 HIGH TEMP NON CARB. GREASE	4kg	12106	16
INDUSTRIAL CLEANER RAPID DRY SPRAY	300ml	34131	11
KILOPOISE 0001	2kg	36065	15
KILOPOISE 0001 GW	2kg	36085	15
KILOPOISE 0031 S	2kg	36135	15
KILOPOISE 0868	2kg	36015	15
KILOPOISE 0868 GW	2kg	36045	15
KILOPOISE 0868 S	2kg	36035	15
MOISTURE GUARD FLUID (GREEN)	5lt	69006	10
MOISTURE GUARD SPRAY (CLEAR)	400ml	69021	10
MOISTURE GUARD SPRAY (GREEN)	400ml	69012	10
PENETRATING SPRAY	300ml	14021	9
PRECISION SILICONE SPRAY	400ml	34035	14
SAPPHIRE 000 FLUID GREASE	5kg/18kg	12276/12284	1
SAPPHIRE 1 BEARING GREASE	400gm/5kg/18kg	12601/12606/12614	1
SAPPHIRE 1 UNILUBE	100ml	12710	3
SAPPHIRE 2 BEARING GREASE	400gm/5kg/18kg/50kg	12171/12176/12175/12178	1
SAPPHIRE AQUA 2	380gm/4kg/18kg	12751/12755/12754	2
SAPPHIRE AQUA-SIL HI-LOAD	500gm/5kg	12263/12266	3
SAPPHIRE AQUA-SIL	85gm/500gm/5kg	12251/12253/12256	3
SAPPHIRE AUTOLUBE COMPLETE	120ml	12604	3
SAPPHIRE AUTOLUBE REFILL	120ml	12600	3
SAPPHIRE ENDURE	100gm/1kg/5kg	12330/12334/12336	3

MAINTENANCE PRODUCTS

PRODUCT NAME	PACK SIZE	PRODUCT CODE	PAGE NO.
SAPPHIRE EXTREME	400gm/5kg/18kg	12211/12216/12214	2
SAPPHIRE HI-LOAD 2	400gm/5kg/18kg	12761/12765/12764	2
SAPPHIRE HI-POWER 22	20lt/200lt	52525/52529	13
SAPPHIRE HI-POWER 32	20lt/200lt	52545/52549	13
SAPPHIRE HI-POWER 46	20lt/200lt	52555/52559	13
SAPPHIRE HI-POWER 68	20lt/200lt	52565/52569	13
SAPPHIRE HI-POWER 100	20lt/200lt	52575/52579	13
SAPPHIRE HI-PRESSURE	500gm/5kg/18kg	12013/12016/12024	2
SAPPHIRE HI-SPEED 2	380gm/450gm/4.5kg/18kg	12051/12053/12056/12055	2
SAPPHIRE HI-TORQUE 100	5lt/20lt	21006/21005	13
SAPPHIRE HI-TORQUE 220	5lt/20lt	21016/21015	13
SAPPHIRE HI-TORQUE 320	5lt/20lt	21026/21025	13
SAPPHIRE HI-TORQUE 460	5lt/20lt	21036/21035	13
SAPPHIRE HI-TORQUE 680	5lt/20lt	21046/21045	13
SAPPHIRE LO-TEMP 2	400gm/4.5kg/18kg	12741/12745/12744	3
SAPPHIRE PRECISION LUBE PTFE SPRAY	400ml	34341	14
SAPPHIRE PREMIER	380gm/4kg/18kg	12471/12475/12474	2
SAPPHIRE PREMIER UNILUBE	100ml	12810	3
SAPPHIRE SPRAY GREASE	400ml	34305	3,14
TUFGEAR SPRAY	400ml	18105	10
TUFGEAR UNIVERSAL	300gm/5kg/15kg	18303/18305/18307	10
TUFLUBE ALLWEATHER	400gm/5kg/18kg	18271/18276/18244	10
ULTRACLEAN 2000	5lt/20lt	34166/34168	11
WIRE ROPE DRESSING (FORMERLY RD 105)	4lt/14lt	20026/20027	6
WIRE ROPE FLUID (FORMERLY RD 205)	5lt/20lt	20046/20045	6
WIRE ROPE SPRAY	400ml	20015	6
Z5 FLUID	5lt/20lt	37002/37008	9
Z25 FLUID	5lt/20lt	37012/37118	9
Z30 FLUID	5lt/20lt	37022/37028	9
Z30 SPRAY	300ml	37020	9

Distributor Information

